



REACH SYSTEMS

The SARGENT Profile Series v.S2 locks offer the ability to extend your Reach access control system using your existing WiFi infrastructure, while eliminating the need for an access panel. The v.S2 can be installed in locations where it would be difficult or cost-prohibitive to have a wired lock. Available in mortise, bored and exit device, the v.S2 provides complete access control in online and offline operation.

Profile Series v.S2 Benefits

- › Networked access control system with **NO PANEL!**
- › Significant reduction in hardware and installation cost
- › Utilizes existing WiFi infrastructure
- › Easy installation in hard-to-wire locations
- › Up to 80% faster installations compared to traditional access control installations



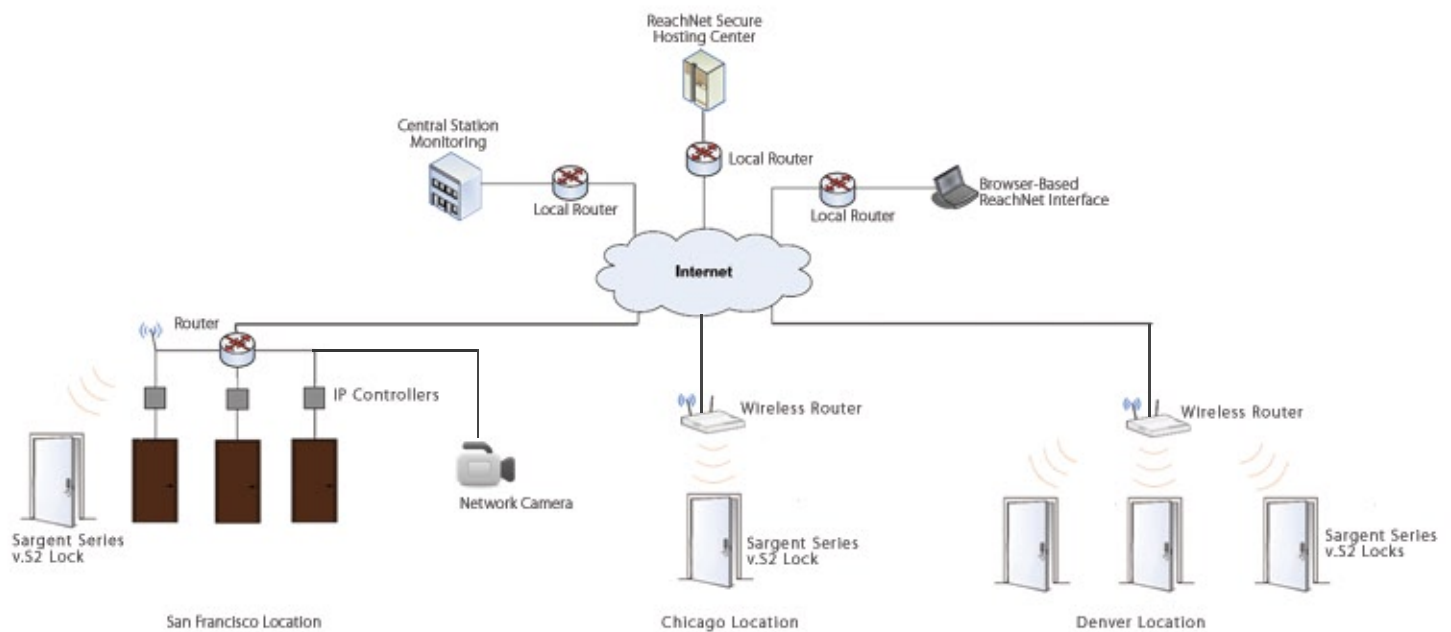
The SARGENT Profile Series WiFi-enabled locksets are now compatible with the Reach Managed Access Platform. This integration enables you to incorporate SARGENT v.S2 and Passport locksets into the Reach ACS allowing the locksets to be remotely monitored and managed over the internet. The Reach implementation completely eliminates the need for an access panel or third-party middleware. The combination delivers a secure, networked, enterprise-class access control system at half the cost of traditional systems.

The wireless features built into the SARGENT v.S2 and Passport locksets, coupled with the convenience and power of the Reach ACS, allows end-users to extend the reach of their online access control systems by using an existing WiFi infrastructure. Doorways that were once too remote or costly to include in an online system can now be connected wirelessly and managed from anywhere with internet access.

The Profile Series v.S2 and Passport products (mortise lock, cylindrical lock and exit device) integrate WiFi technology, a Prox reader (v.S2), mag-stripe card reader (Passport), optional keypad and monitoring capabilities at the door. By utilizing open-standard 802.11 b/g WiFi infrastructure into the v.S2 and Passport product design, facilities can leverage their existing wireless network or simply install a network with off-the-shelf products.

The v.S2 and Passport locksets provide centrally managed control without many of the costs, labor and infrastructure upgrades associated with a traditional hardwired system.

System Architecture



Key Features:

- › Forced Door, Unknown Card and Door Held Open
- › Advanced data security with standard encryption techniques
- › Supports open standard WIFI network security - WEP, WPA, LEAP
- › Maximum uptime and redundancy through distributed intelligence at each opening
- › Stand-alone operation - even in absence of a network
- › Supports 2,000 users and 10,000 local event transaction history (audit trail)
- › Real-time lockdown capabilities
- › Supports all HID 125 kHz proximity formats up to 39 bits
- › Dual credentialing with keypad option available
- › Available for use on exterior doors: weatherseal gasket, conduit and shroud
- › Available with MicroShield™ antimicrobial finish
- › Provided with plug and play ElectroLynx® connectors for ease of hard powered installation
- › 9v DC power by AA Batteries

Aesthetically complemented by

- Designer Levers
- Studio Collection
- Coastal Series

Available with:

- 10 Line Bored Lock
- 8200 Series Mortise Lock
- 80 Series Exit Device



1330 Broadway, Suite 1201, Oakland, CA, 94612
P 510.452.9532 | F 510.452.9292
sales@reachsystems.com | www.reachsystems.com